



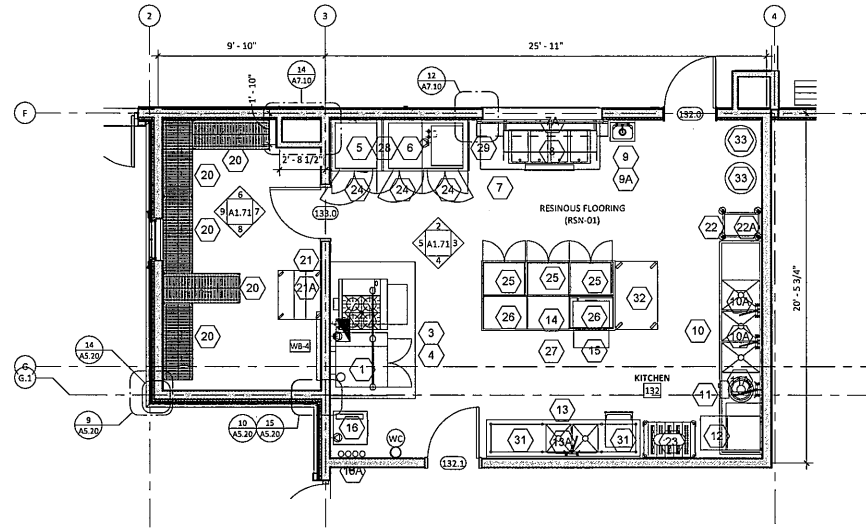
Turowski Architecture
 P.O. Box 1290
 313 Wareham Road
 Marion, MA 02738
 508.758.9777 phone
 508.748.2444 fax
 www.turowski.com

- ABBREVIATIONS:
- | | | | | | |
|-----|-----------------------|-------|----------------------|------|--|
| A | AMPERES | DXH | EXHAUST FLOOR DRAIN | IW | INDIRECT WASTE KITCHEN EQUIP. CONTRACTOR |
| AFF | ABOVE FINISH FLOOR | FD | FLOOR DRAIN | KEC | KITCHEN EQUIP. CONTRACTOR |
| BFF | BELOW FINISH FLOOR | FSD | FUNNEL FLOOR DRAIN | KW | KELWATT |
| BTC | BRANCH TO CONNECTION | FHW | FAHRENHEIT HOT WATER | MBTU | BTU PER HOUR/1000 |
| C&P | CORD & PLUG PROVIDED | FS | FLOOR SINK | MUA | MAKE-UP AIR |
| CFM | CUBIC FEET PER MINUTE | G | GAS | PC | PLUMBING CONTRACTOR |
| CR | CONDENSATE RETURN | GC | GENERAL CONTRACTOR | QC | QUICK DISCONNECT |
| CW | COLD WATER | GI | GREASE INTERCEPTOR | SP | STATIC PRESSURE (WG) |
| DA | DROP FROM ABOVE | HP | HORSEPOWER | SR | SINGLE RECEPTACLE |
| DR | DUPLEX RECEPTACLE | H/W | HOT WATER | SS | STEAM SUPPLY |
| EC | ELECTRICAL CONTRACTOR | H&C/W | HOT & COLD WATER | W | WASTE (DIRECT CONNECTION) |

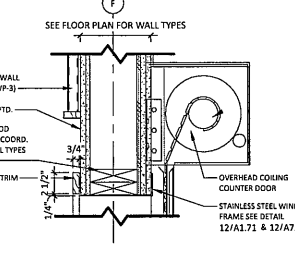
SCHEDULE OF FOOD SERVICE EQUIPMENT & CONNECTIONS

ITEM	QTY	DESCRIPTION	PLUMBING	VENTILATION	ELECTRICAL	BASIS OF DESIGN MFG	BASIS OF DESIGN MODEL NUMBER(S)	REQUIRED ACCESSORIES
1	1	CONVECTION OVEN	3/4" G @ 50 MBTU W/ FLEX HOSE & QD		120V 1PH 8A	BLODGETT	DFG-200-15	FLEX HOSE, QUICK DISCONNECT
2	1	4 BURNER RANGE W/ GRIDDLE & CONVECTION OVEN	3/4" G @ 154 MBTU W/ FLEX HOSE & QD		120V 1PH 4A	GARLAND	G36-4G12CS1	FLEX HOSE, QUICK DISCONNECT, WALL MOUNT ANCHOR, LOCKING CASTER KIT, STAINLESS BACK GUARD WITH SHELF
3	1	EXHAUST HOOD VENTILATOR 96" W X 60" D X 28" H		2200 CFM 16x16 COLLAR SIZE	1-1/2HP, 208V 3PH (FAN), 220V 1PH 20A (LIGHTS/FIRE ALARM INTERLOCK)	CUSTOM		INTEGRAL LIGHTING, REMOTE FAN CFM, RHIOSTAT
3A	1	WALL PANEL				CUSTOM		FULL WIDTH OF HOOD, FLOOR TO UNDERSIDE OF HOOD
4	1	FIRE SUPPRESSION SYSTEM			120V 1PH 20A, FIRE ALARM INTERLOCK	ANSUL	R-102	
5	1	REACH IN FREEZER 2 DOOR	IW TO FS (T80)		120V 1PH 10A, NEMA 5-15R	TRAUlsen	G12001-36	(8) 18"x26" TRAY SLIDES AND (8) ALUMINUM SHEET PANS
6	1	REACH IN REFRIGERATOR 4 DOOR	IW TO FS (T80)		120V 1PH 8A, NEMA 5-15R	TRAUlsen	G20001-48	(15) 18"x26" TRAY SLIDES AND (15) ALUMINUM SHEET PANS
7	1	SERVING COUNTER W/ BASE CABINETS				CUSTOM		
7A	1	SNEEZE / BREATHE GUARD				VERSA-GARD	CUSTOM 1-27-VG2	
8	1	4 WELL HOT FOOD WARMER W/ MANFOLD DRAINS, AUTO FILL, SINGLE CONTROL PANEL	1/2" HW 1" NPT IW TO FS		208/240V 3PH 30A, 1650 WATTS PER WELL	WELLS	MOD400TDMAFS	
9	1	HAND WASH SINK	1-1/2" W			KROWNE	H5320	
9A	1	BACKSPASH MOUNT FAUCET	1/2" CW 1/2" HW			T&S BRASS AND BRONZE WORKS	B-0330-04	AERATOR AND ADAPTER ELBOW INSTALLATION KIT
10	1	3 COMPARTMENT SINK WITH DRAINING SIDE BOARDS	(3) 2" DW THRU GI, 3/4" HW RBP&P SOAP			CUSTOM		PROVIDE MOUNTING SUPPORTS FOR DISPOSAL CONTROL PANEL
10A	2	BACKSPASH MOUNT FAUCET	(2) 3/4" CW (2) 3/4" 140F HW			T&S BRASS AND BRONZE WORKS	B-0290	ELBOW INSTALLATION KIT
11	1	DISPOSAL W/ AUX CONTROL & 15" CONE	(2) 1/2" CW 2" DW THRU GI		208/230V 3PH 6A	SALVAIDR	220-CA-15-ARSS (230/60/3)	LEG SUPPORT RUBBER SCRAP RING
11A	1	PRE-RINSE SPRAYER	1/2" CW 1/2" HW			T&S BRASS AND BRONZE WORKS	B-0133-BC	ELBOW INSTALLATION KIT
12	1	UNDER COUNTER WARE WASHER	3/4" 140F HW GHT 2" W THRU GI		208/240V 3PH 24A	HOBART	1UXH HOT (208/240/60/3)	DRAIN WATER TEMPERING KIT, ADDITIONAL FLAT RACK, ADDITIONAL PEG RACK
13	2	2 COMPARTMENT PREP TABLE W/ BASE CABINETS	(2) 2" IW THRU GI			CUSTOM		
13A	1	BACKSPASH MOUNT FAUCET	1/2" CW 1/2" 120F HW			T&S BRASS AND BRONZE WORKS	B-0231	ELBOW INSTALLATION KIT
14	1	ISLAND COUNTER TOP MOUNTED OVER BASE CABINETS 48W X 94L X 1.5H				CUSTOM		
15	1	MICROWAVE			(1) 208/240V 1PH 30A NEMA 6-30P	AMANA	AMS093	
16	1	ICE MACHINE W/ BIN	1/2" FCW 1/2" & 3/4" IW TO FS		120V 1PH 15A	SCOTTSMAN	C0322MA-1 B3225	KYS ICE LEVEL CONTROL 6" STAINLESS LEG KIT
16A	1	ICE MACHINE WATER FILTER	1/2" CW			3M	ICE40-5	3 SPARE FILTERS, CARTRIDGES
17	1	MOP SINK WITH 60" BACK AND SIDE SPLASH	1/2" CW, 1/2" HW 2" W UNDER FLOOR			BY PLUMBING CONTRACTOR		SHELF W/ MOP HOLDER
17A	1	24" SHELF WITH MOP HOLDER				ADVANCE TABCO	K-245	
17B	1	CUSTODIAL CHEMICAL DISPENSER (BY OWNER)				BY OWNER		WALL MOUNT
18	1	STACK WASHER DRYER	1/2" CW GHT 1/2" HW GHT 2" IW	4" OUTLET 220 CFM	(2) 120/208/240V 1PH 30A	SPEED QUEEN	LTEESAP155TW01	
19	3	WIRE RACK SHELVING 36X21 5 TIER - 74 1/2" HIGH				METRO SUPER ERECTA	(3) 2136NC (4) 74P	(3) SHELVES (4) POSTS
20	4	WIRE RACK SHELVING 54X21 5 TIER - 74 1/2" HIGH				METRO SUPER ERECTA	(5) 2156NC (4) 74P	(5) SHELVES (4) POSTS
21	1	SIDE LOAD ROLLING BUN & PAN RACK				METRO	RD39N	A37 CORNER BUMPERS, CASTER LOCKS, PAN STOPS
21A	20	18X26 ALUMINUM PAN				CHANNEL	BP-1	
22	1	6 TIER ROLLING LUG RACK				ADVANCE TABCO	LR6	
22A	6	POLYETHYLENE LUG TRAY				CHANNEL	LB15-G	
23	1	4-TIER ROLLING CLEAN WARE DRYING RACK - 24X36				METRO MAX Q	(4) M02348B (4) M063UP (2) SMPX (2) SMPBX	(4) SHELVES, (4) POSTS, (2) 5" SWIVEL CASTER, (2) 5" BRAKE CASTER
24	3	STAINLESS STEEL UPPER CABINETS 32W X 22H X 36D				CUSTOM		
25	3	STAINLESS STEEL 2 DOOR, 1 DRAWER BASE CABINETS W/ LEGS 30W X 32H X 24D				CUSTOM		
26	2	STAINLESS STEEL OPEN SHELF, 1 DRAWER BASE CABINETS W/ LEGS 32W X 32H X 24D				CUSTOM		
27	1	STAINLESS STEEL ADA APRON 3W X 3.5H X 29D				CUSTOM		
28	1	VANITY PANEL 1W X 78H X 36D				CUSTOM		
29	1	VANITY PANEL 1W X 108H X 36D				CUSTOM		
30	3	STAINLESS STEEL SHELF 48W				CUSTOM		
31	2	STAINLESS STEEL 2 DOOR BASE CABINETS W/ LEGS 30W X 32H X 24D				CUSTOM		
32	1	MOBILE WORK TABLE 30W X 48L - (2) SHELF				CUSTOM		
33	2	44 GAL TRASH CAN (BY OWNER)				RUBBERMAID BRUTE	FG264556GRAY	

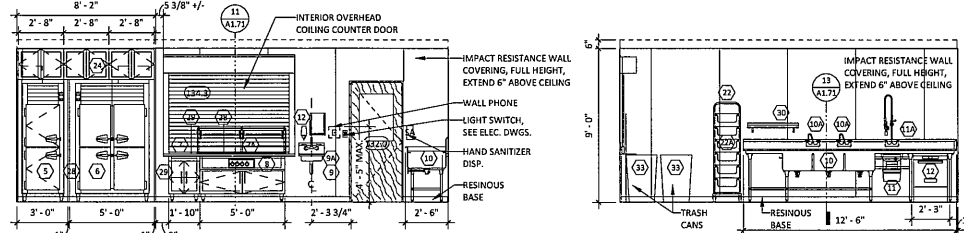
Notes: Following apply to all Foodservice Equipment Drawings.
 Connections, stub-outs and dimensions shown are to be used for estimating engineering requirements only. No architectural or engineering service is intended or assumed.
 The Kitchen Equipment Contractor shall provide accurate 1/2"-1'-0" stub-outs plans showing exact sizes and locations of all service stubs through walls and/or floors. Services of fixtures shall show cut-out of walls whenever possible allowing clearance for traps, valves, switches, and the like.
 Traps, drainlines, grease interceptors, shut-off valves and connecting piping shall be provided and installed by the Plumbing Sub-Contractor.
 Conduit, junction boxes, outlets, disconnects, and connecting wiring shall be provided and installed by the Electrical Sub-Contractor. Intervening of refrigeration components and remote controls such as found on a garbage disposer shall be installed by the Electrical Sub-Contractor.
 Blowers, ductwork and duct connections shall be provided and installed by the Heating and Ventilation Sub-Contractor. Controls for such systems shall be provided and installed by the specified sub-contractor.



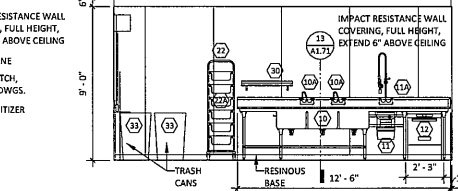
1 ENLARGED PLAN - KITCHEN PLAN 1/4" = 1'-0"



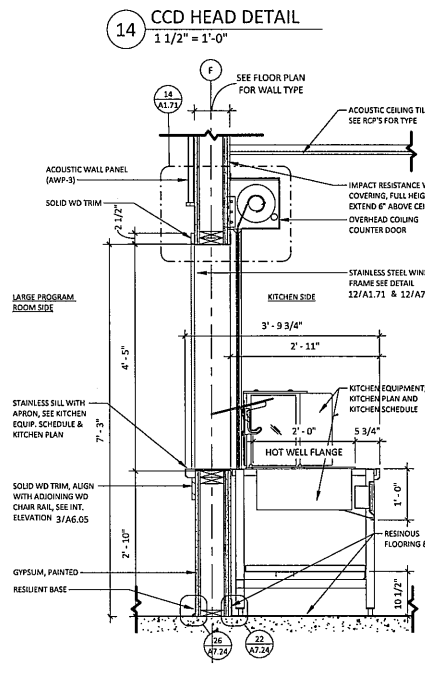
14 CCD HEAD DETAIL 1 1/2" = 1'-0"



2 132 KITCHEN EAST 1/4" = 1'-0"

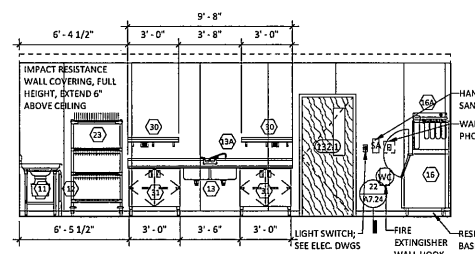


3 132 KITCHEN SOUTH 1/4" = 1'-0"

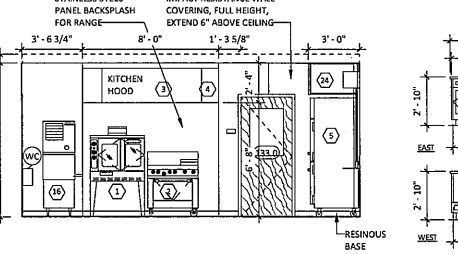


10 KITCHEN ISLAND ELEVATION 1/4" = 1'-0"

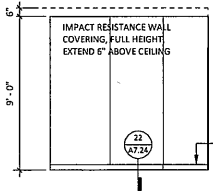
11 CCD SECTION DETAIL 3/4" = 1'-0"



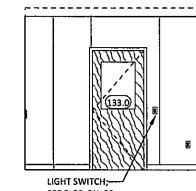
4 132 KITCHEN WEST 1/4" = 1'-0"



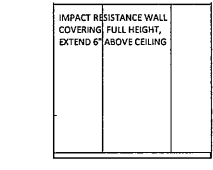
5 132 KITCHEN NORTH 1/4" = 1'-0"



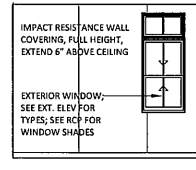
6 133 KITCHEN STOR. EAST 1/4" = 1'-0"



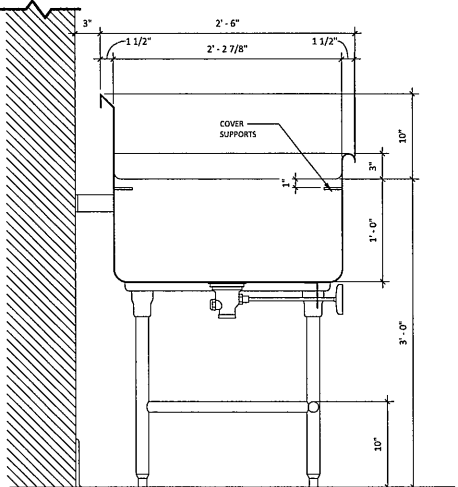
7 133 KITCHEN STOR. SOUTH 1/4" = 1'-0"



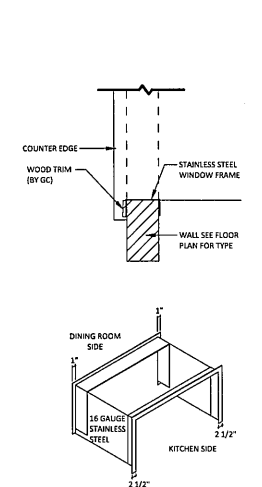
8 133 KITCHEN STOR. WEST 1/4" = 1'-0"



9 133 KITCHEN STOR. NORTH 1/4" = 1'-0"



13 THREE COMPARTMENT SINK DETAIL 1 1/2" = 1'-0"



12 KITCHEN OPENING DETAIL 3/4" = 1'-0"

NOTE: SEE A6.01 FOR INTERIOR LEGENDS, KEYS, NOTES, AND MOUNTING HEIGHTS

UPTON COMMUNITY CENTER
 9 MILFORD STREET, UPTON, MA 01568
 100% CONSTRUCTION DOCUMENTS - BID SET

TITLE
KITCHEN FLOOR PLAN, INT. ELEV., SCHEDULE, LEGEND, & NOTES
 20-05
 DRAWN BY
 DB, TP
 CHECKED BY
 BS, LT, PT
 DATE
 9/8/2011
 SCALE
 As indicated
 SHEET NO.
A1.71